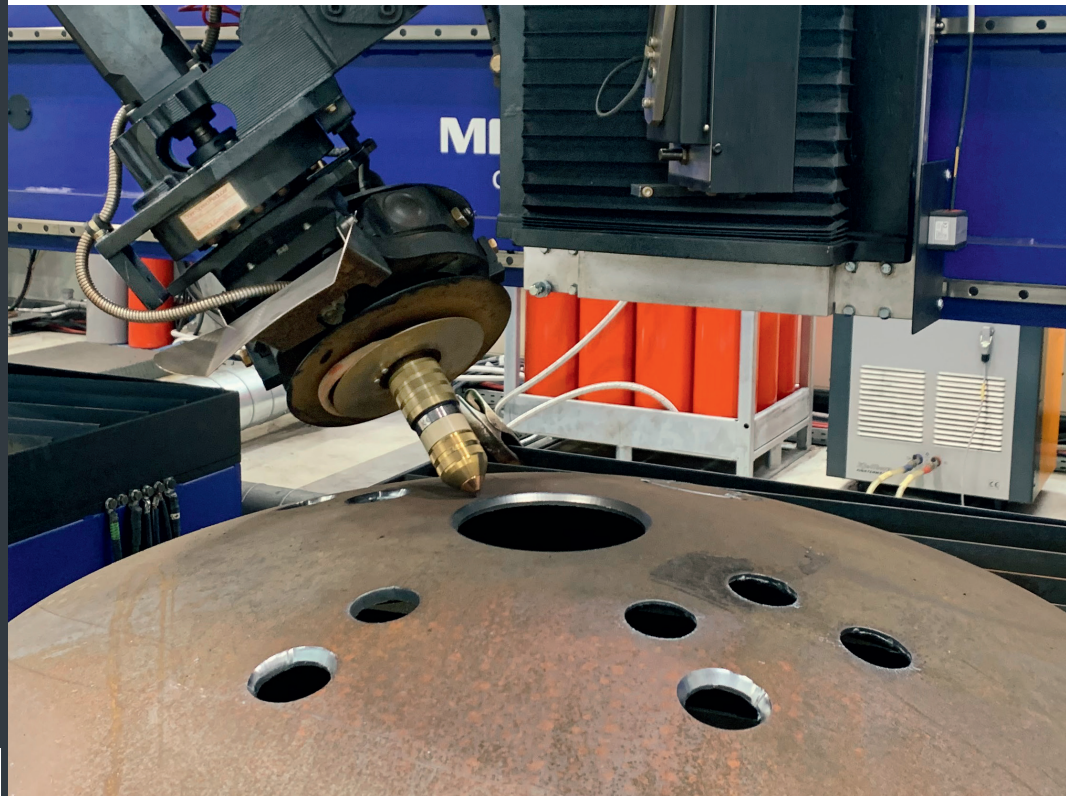


# BOILER END NT

Professional  
programming &  
processing of  
boiler ends

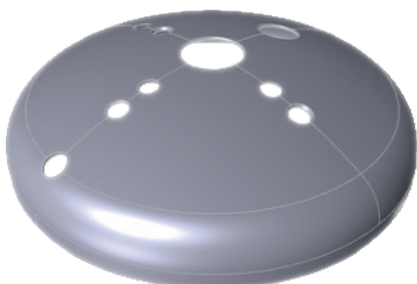


## PRODUCT

„BoilerEnd NT“ is the optimized application for programming and machining boiler ends, such as DIN-28011 or DIN-28013. It consists of a software component for our OmniWin® CAD/CAM software and a hardware component, the Skew Rotator Infinity plasma bevel cutting unit. Existing installations can also be retrofitted.

BoilerEnd NT is the perfect solution for companies in plant and mechanical engineering, environmental and water technology, oil & gas and energy, the food and beverage industry, the pharmaceutical and chemical industry, as well as heating, air conditioning and refrigeration technology.

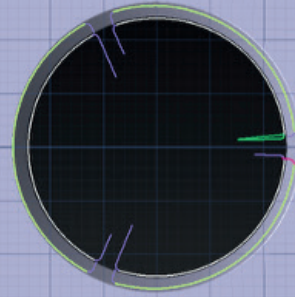
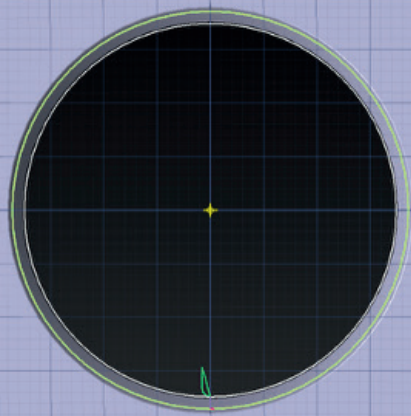
It has never been easier or faster to process boiler ends with our solutions.



STEP import

### Benefits:

- + Complete import of 3D boiler end geometries via STEP file import for error-free and fast geometry transfer from the CAD program.
- + Intuitive user interface for parametric design.
- + Maximum process reliability and cutting quality thanks to precise height scanning of the cutting path using state-of-the-art laser technology. This results in maximum precision through active height control of the cutting/marking head. No speed limitations.
- + One product, maximum flexibility: Cutting of boiler ends and flat sheets on one machine. Multiple cuts X, Y, K with the same freedom as when cutting flat sheets.



Top view in the software environment.  
Right breakout with support tabs.



Finished cut

## Technical requirements

### Machine:

An OmniMat cutting machine with a Skew Rotator Infinity plasma bevel cutting unit is the ideal combination for making consecutive multiple cuts with direct transitions. This is because X, Y, or K cuts, where the material is detached and falls away after the first circumferential cut, must be able to be cut continuously. Depending on the maximum floor height, a Z-axis stroke of 600 mm is recommended.

### Control:

- + Hardware: Global Control<sup>Plus</sup>
- + Currently supported control software on a project basis: > Version 12.4

### OmniWin workplace:

- + The minimum requirement is the latest version of OmniWin
- + 3D import STEP format
- + Bevel option & BoilerEnd option

## Messer Cutting Systems GmbH

Otto-Hahn-Straße 2-4  
D-64823 Groß-Umstadt

Tel. +49 6078 787-0  
Mail [info@messer-cutting.com](mailto:info@messer-cutting.com)

[messer-cutting.com](http://messer-cutting.com)

