

SPARE PARTS LIST

Welding insert STARLET

Type of gases: acetylene

LISTE DES PIÈCES DE RECHANGE

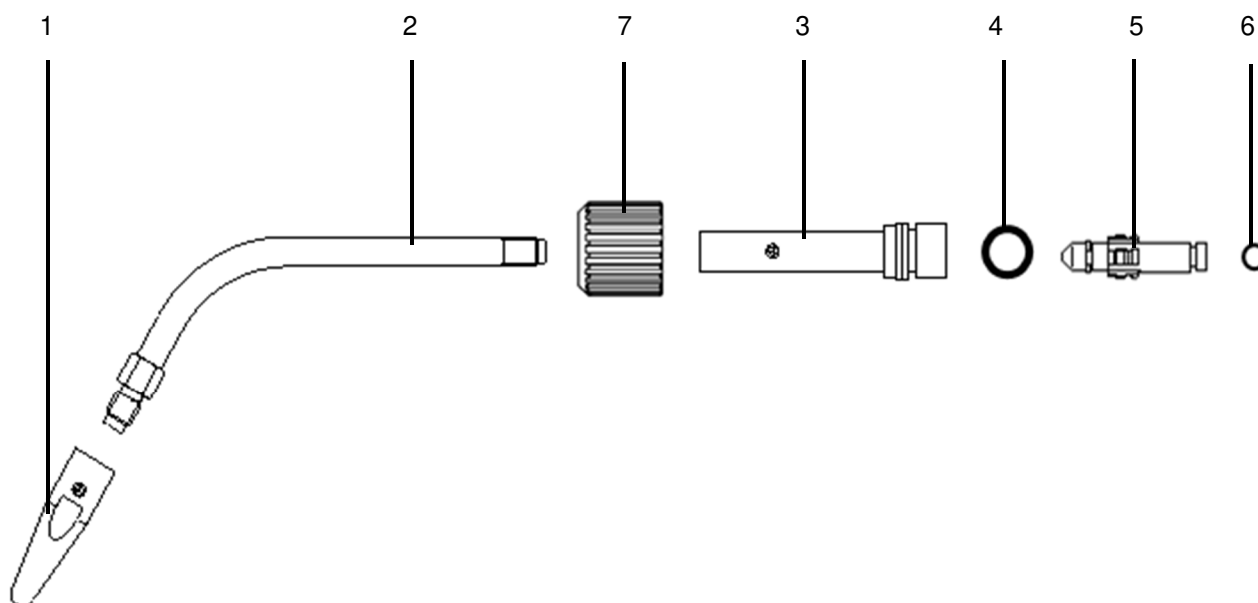
Insert de soudage STARLET

Type de gaz: acétylène

LISTA DE REQUESTOS

Inserto de soldadura STARLET

Tipo de gas: acetileno



| Pos. Item Pos. | Benennung Description Désignation Nombre | Sach. Nr. / Art. no. No. d'article / Art. No. | | | |
|----------------------|---|--|------------------|------------------|--------------------|
| | | 211 - A Gr. 1 | 211 - A Gr. 2 | 211 - A Gr. 3 | 211 - A Gr. 3,5 |
| 1 - 7 | Schweisseinsatz STARLET Welding insert STARLET Insert de soudage STARLET Inserto de soldadura STARLET | 716.01611 | 716.01612 | 716.01613 | 716.01830 |
| 1 | Schweissdüse Welding nozzle Buse de chauffage Boquilla de soldadura | 242.34110 | 242.34210 | 242.34310 | 716.00686 |
| 2 | Mischrohr Mixing pipe Tube de mélange Tubo de mezcla | 716.05410 | 716.05412 | 716.05413 | → |
| 3 | Mischdüse Mixing nozzle Buse de mélange Boquilla de mezclado | 716.01651 | 716.01652 | 716.01653 | 716.01881 |
| 4 | O-Ring 11 x 2 O-ring Joint torique Junta tórica | 0.329.527 | → | → | → |
| 5 | Druckdüse Pressure nozzle Buse de pression Boquilla de presión | 716.04970 | 716.04971 | 716.04972 | 716.05127 |
| 6 | O-Ring 5 x 1,5 O-ring Joint torique Junta tórica | 673.29059 | → | → | → |
| 7 | Anschlussmutter Connecting nut Capuchon de record Tuerca de conexiona | 242.49970 | → | → | → |

| Pos. Item Pos. | Benennung Description Désignation Nombre | Sach. Nr. / Art. no. No. d'article / Art. No. | | |
|----------------------|---|--|---|---|
| 1 - 7 | Schweisseinsatz STARLET Welding insert STARLET Insert de soudage STARLET Inserto de soldadura STARLET | 211 - A Gr. 4 716.01614 | 211 - A Gr. 5 716.01615 | 211 - A Gr. 6 716.01616 |
| 1 | Schweissdüse Welding nozzle Buse de chauffage Boquilla de soldadura | 242.34410 | 242.34510 | 242.34610 |
| 2 | Mischrohr Mixing pipe Tube de mélange Tubo de mezcla | 716.05414 | 716.05415 | 716.05416 |
| 3 | Mischdüse Mixing nozzle Buse de mélange Boquilla de mezclado | 716.01654 | 716.01655 | 716.01656 |
| 4 | O-Ring 11 x 2 O-ring Joint torique Junta tórica | 0.329.527 | → | → |
| 5 | Druckdüse Pressure nozzle Buse de pression Boquilla de presión | 716.04973 | 716.04974 | 716.04975 |
| 6 | O-Ring 5 x 1,5 O-ring Joint torique Junta tórica | 673.29059 | → | → |
| 7 | Anschlussmutter Connecting nut Capuchon de record Tuerca de conexiona | 242.49970 | → | → |

Bitte Reparaturanleitung beachten
Please follow the repair instructions
Veuillez respecter les intructions de reparacion
Rogamos prestar atencion a las instrucciones de reparaci3n

Änderungen vorbehalten
Subject to alteration
Droit de modification reserve
Salvo modification

MESSER Cutting Systems GmbH
Otto-Hahn-Str. 2-4
D-64823 Groß-Umstadt
Tel.: +49 (0) 6078 787-0
Fax: +49 (0) 6078 787-150
E-Mail: info@messer-cutting.com

© Messer Cutting Systems
® = registriertes Warenzeichen
Quality management system